



Algorithm for symptomatic staff, symptomatic household testing and further actions

11 April 2020

Relevant history and clinical symptoms:

- Date of onset of symptoms
- Type of symptoms; any of:
 - fever $\geq 37.8^{\circ}\text{C}$
 - new onset persistent cough (with or without sputum), hoarseness, nasal discharge or congestion, shortness of breath, sore throat, wheezing, sneezing
 - new onset anosmia with or without headache.

Table 1: Decisions and actions

Staff status	Before swab result	COVID test swab result	Actions
A) Symptomatic staff The symptomatic staff gets swabbed on Day 3 or 4 of symptoms		Not detected = Fit	Return to work once 48 hours symptom free (to cover other viral respiratory infections); continue good hand hygiene. Work from home depending on health condition and nature of work, in discussion with line manager. If becomes symptomatic, inform line manager promptly.
		Detected = Not fit	Staff member continues self-isolation for required 7 days and return to work if symptoms free for 48 hours other than dry cough; continue good hand hygiene. Work from home depending on health condition and nature of work, in discussion with line manager. If becomes symptomatic, inform line manager promptly.

The Royal College of Pathologists

6 Alie Street
London E1 8QT
T: 020 7451 6700
F: 020 7451 6701
www.rcpath.org

Staff status	Before swab result	COVID test swab result	Actions
B) Asymptomatic staff with symptomatic Household Index Case(s) History of possible contact with positive case(s) The symptomatic household index case(s) gets swabbed on their Day 3 or 4 of symptoms	Fit to work from home where appropriate; otherwise await swab result	Not detected = Fit	Return to work If subsequently staff becomes symptomatic, inform line manager promptly. Symptomatic staff to be tested as per above symptomatic staff route.
		Detected = Not fit	<u>Staff member continues with household isolation for 14 days;</u> work from home, practice good hand hygiene. Work from home depending on health condition and nature of work, in discussion with line manager. If becomes symptomatic, inform line manager promptly.

Table adapted from Public Health England (PHE) stay at home guidance, as well as PHE guidance on the management of hospital staff and patients who have been exposed to COVID-19.

PHE. *Stay at home: guidance for households with possible coronavirus (COVID-19) infection.* Available from: <https://www.gov.uk/government/publications/covid-19-stay-at-home-guidance/stay-at-home-guidance-for-households-with-possible-coronavirus-covid-19-infection>

PHE. *COVID-19: management of exposed healthcare workers and patients in hospital settings.* Available from: <https://www.gov.uk/government/publications/covid-19-management-of-exposed-healthcare-workers-and-patients-in-hospital-settings>

Figure 1: COVID-19 algorithm – advice for staff following testing

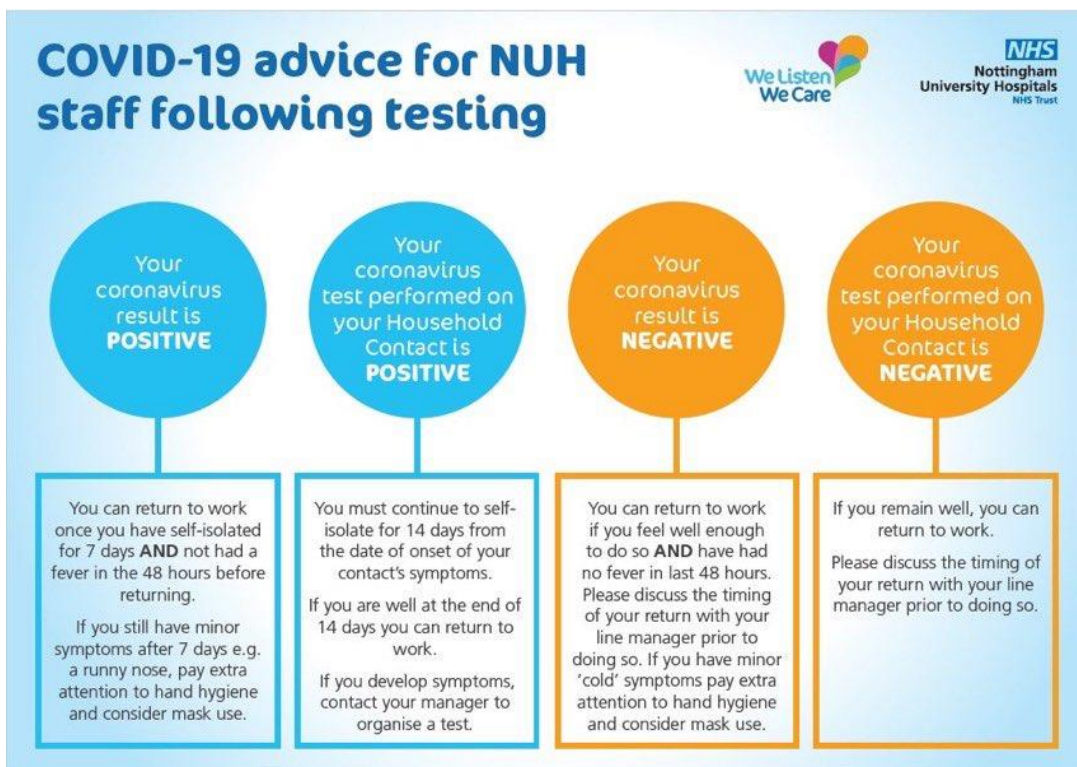


Figure from Neil Pease (@drneilpease), on behalf of @TeamNUH, Nottingham University Hospitals NHS Trust.