

2023 winners

Over 18 Category

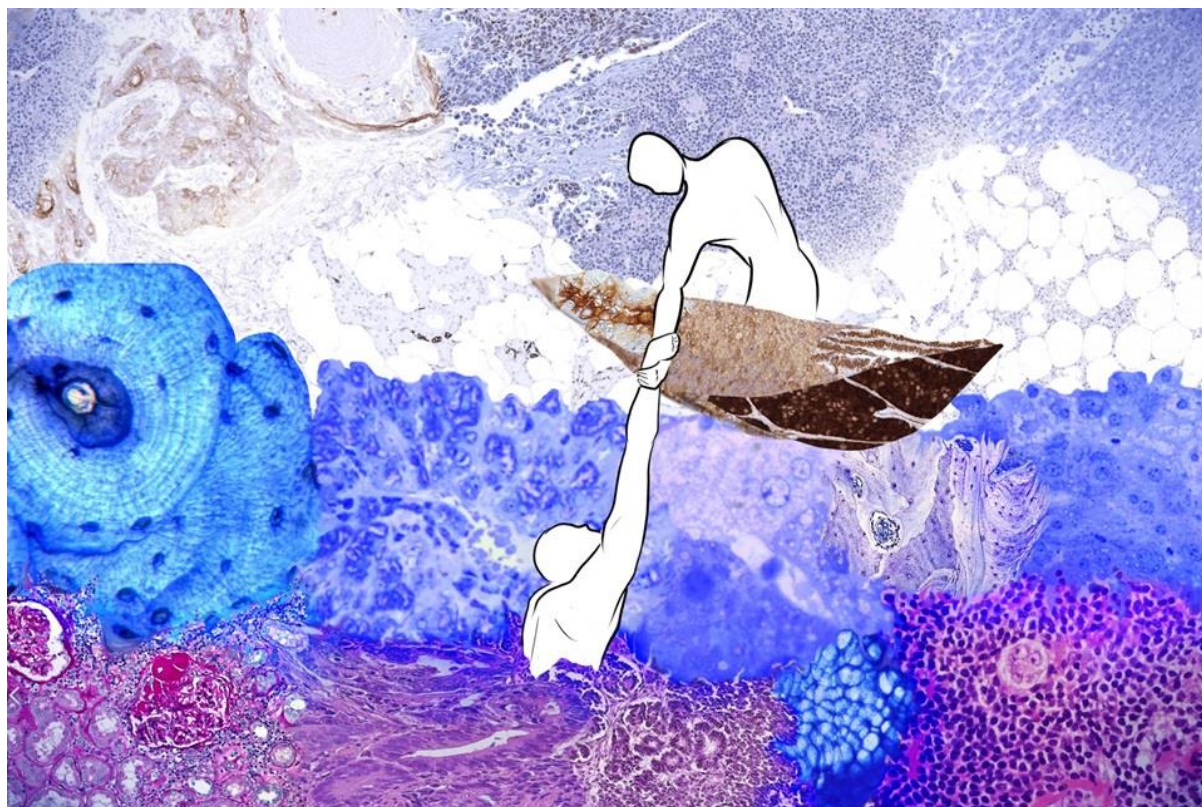
Winner: 'The Wearer of Many Hats' by Helen Kalirai (UK)



The painting is oil paint on canvas built up over several months. The canvas is 50 x 80 cm

This painting and its title were inspired by ever evolving roles undertaken by Pathologists in the study of disease. It creates an image that draws on the beauty of histopathology, interweaved with cutting edge molecular genetics in prognosis and as companion diagnostics for treatment decisions, and the hands of the Royal College of Pathologists that are key in supporting and developing the next generation of pathologists.

Runner up: 'The Saviour' by Ro'a Azzam (Egypt)



Digital artwork using a drawing tablet and a drawing software with some collages from histopathology slides

I asked a pathology professor how he sees pathology and he told me that to him pathology is like a lifeline that saves a patient from an ocean of diseases. As an artist and a medical student, histopathology stood out for me. The details and the stains create an artwork that pathologists can somehow interpret into a diagnosis. I wanted to turn this admiration into an art piece.

Runner up: 'The Lives We Hold' by Meredith Herman (United States)

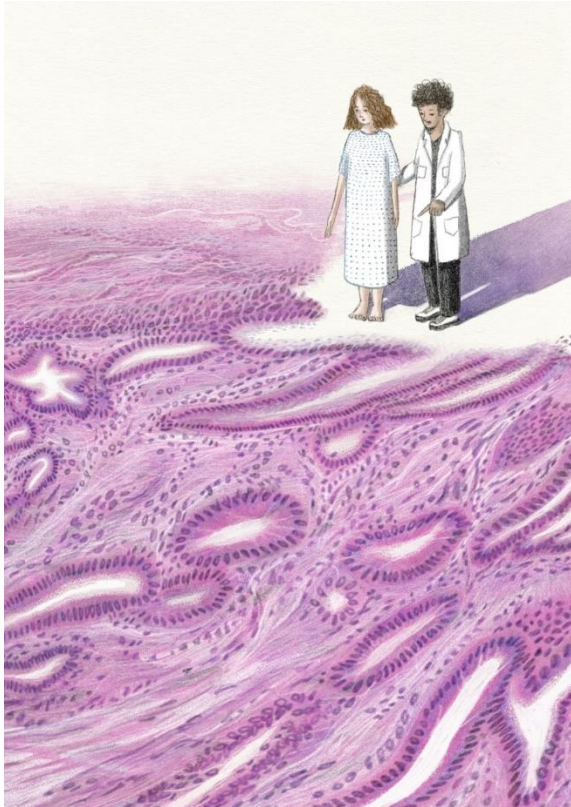


Oil on canvas, 18"x24"

Our tiniest life forms—cells and DNA—are held by the most caring, competent pathologists and laboratory professionals. Pathologists see patients through a high-power lens and advanced molecular techniques. Patients have questions; Pathologists find answers.

Their mission: To provide high quality testing for the best level of care people deserve.

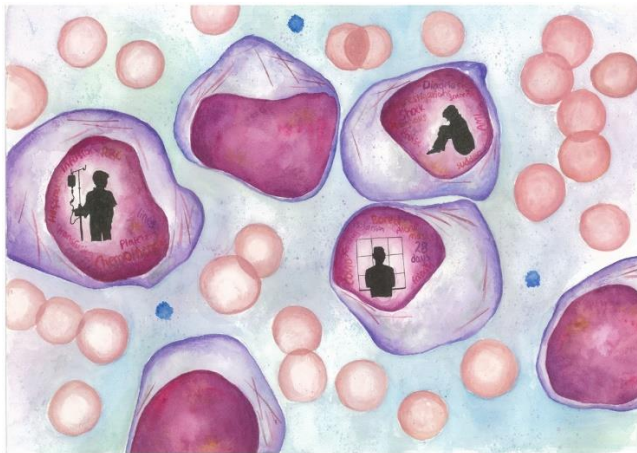
Commended entry: 'A shared journey of discovery and understanding' by Tongyu Zheng (United Kingdom)



This is a digital art piece made using Adobe Fresco. Everything is hand drawn using an iPad and stylus.

Similar to the ocean, the world of histopathology is vast. The pathologist plays a pivotal role in navigating through this sea of cells and tissues and guiding the patient to understanding their own body and health.

Commended entry: 'The Patient Behind the Film' by Emma Perkins (Australia)



Watercolour paints and fine liner pens

Inspired by one of the first patients I met as a F1 doctor working on a Haematology ward during the pandemic. A young man, who had noticed an unusual bruise just days before, was diagnosed with Acute Myeloid Leukaemia. Suddenly he found himself in a side room for 28 days receiving an intense cycle of chemotherapy, unable to have any visitors. The relationship between pathologist and patient was vital to help him navigate such an isolating, scary and uncertain time.

Commended entry: 'Blossoming Tissue' by Alexandra MacLachlan (United Kingdom)



A digital mosaic taken from a handmade, multimedia, A5 artist's book that compiles textures of tissue paper, coloured paper, observational graphite drawings of crushed tissue paper, watercolours and ink.

Titularly inspired by Blossom the Cow and visually influenced by the technical imagery of pathology: bacterial growth on agar plates; the variation in cell density of immunohistochemistry; and the all-round contradiction and interplay of natural forms and cell structures engaging with the repetitive mechanics and rigid geometry of medical technology.

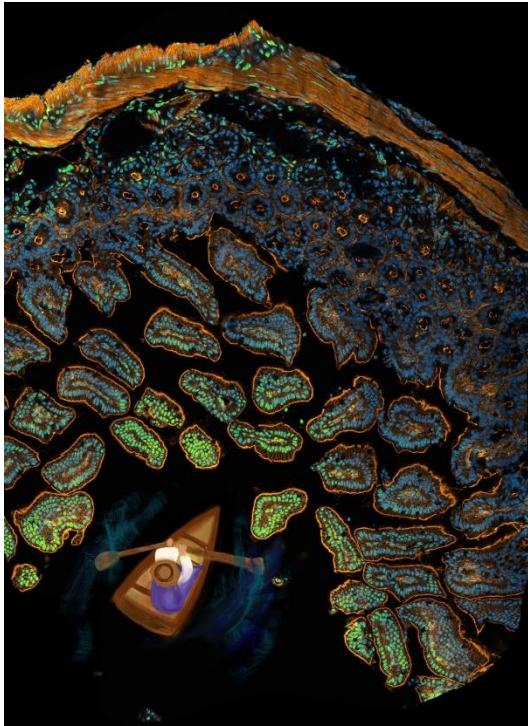
Commended entry: 'SpeciMen' by Izzy Barratt (United Kingdom)



Cut out photomicrographs

These characters represent pathologists' patients cut out from photomicrographs of histopathological sections. The piece suggests the patients are defined by their diseases.

Commended entry: 'The Gut Instinct' by Dr. Adeeba Fathima Valiya Thodiyil (United Kingdom)



Fluorescence microscopy image of mouse intestine counterstained for nucleus and actin is painted upon with a hand drawn picture of a person rowing in a boat, drawn in procreate app on ipad.

A scientist is rowing through the 'swamps' of intestine to understand how environmental influence affects the immunological response through the gut. Looking through microscopy images for experimental project inspired the feeling of rowing through the myriads of anatomical structures in the gut.

Commended entry: 'The Truth-Seeker' by Dr. Shivam Chakraborty

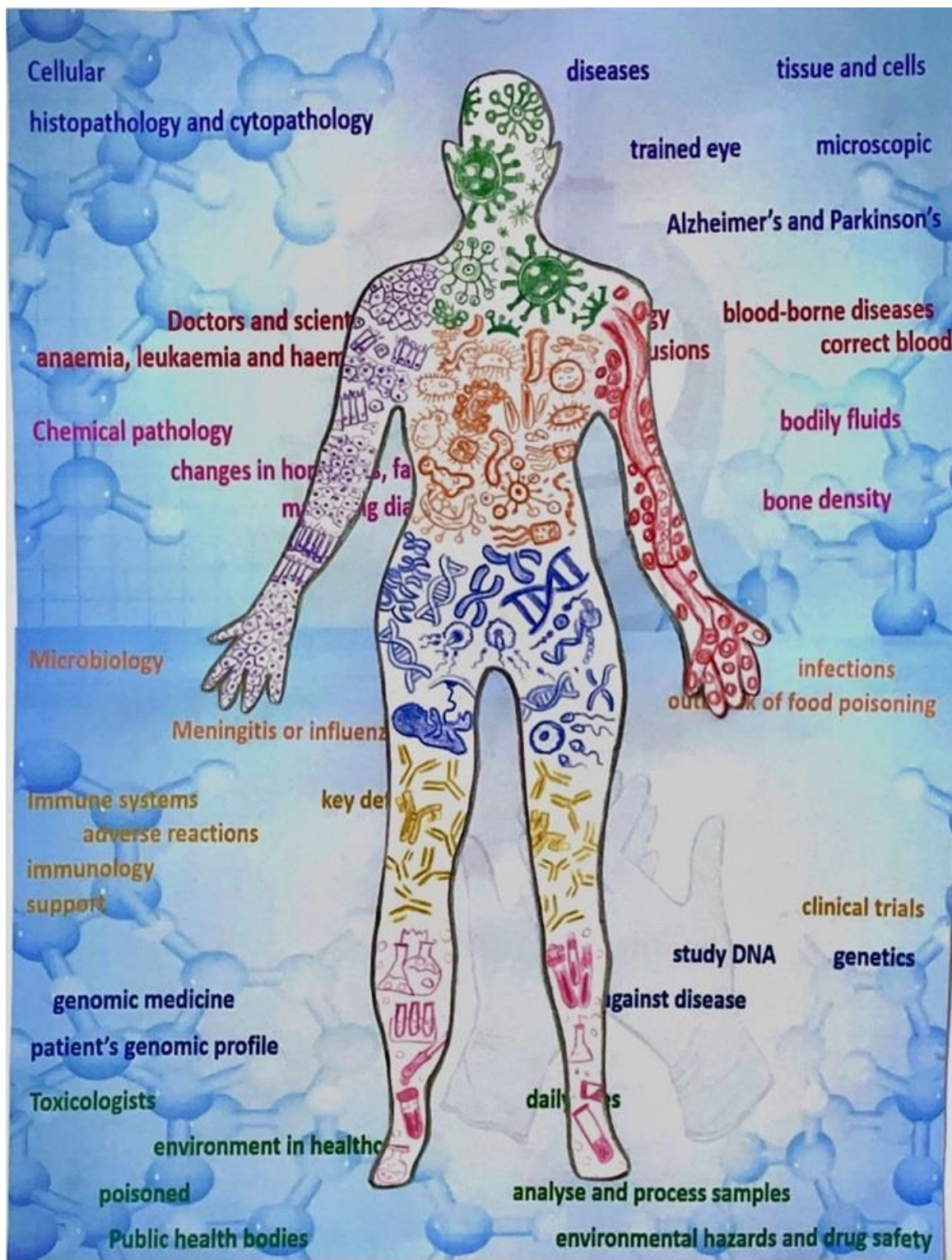


Acrylic and permanent marker on paper.

In this painting role of a pathologist in a patient's life is described. There is an ocean of various diseases depicted by cells belonging to various disease conditions. Few patients are seen drowning in the ocean of diseases asking for help. The pathologist with a boat of books sailing in the ocean with his/her microscope aimed at the horizon for direction(diagnosis) is giving the patients direction, hope. The pathologist here saving the patients from drowning in a maze of various diseases.

11-17 Category

Winner: 'Pathology from head to toe' by Anjelina Singh (United Kingdom)



Freehand coloured drawing of the body. The digital words were taken from text from the Royal College of Pathologists passage on 17 careers.

Different specialties within pathology look after the entire patient from head to toe. My artwork of a patient's body illustrates the diseases they may encounter. My love of black-out poetry inspired my background which reveals how pathologists may analyse, process and help patients. Each colour, corresponds to a different career in pathology.

Runner up: 'The Art of Patient Diagnosis' by Amy Elghobashy (United Kingdom)



To create the piece, I mainly used coloured pencil, but small details such as highlights were added with acrylic marker on top. For the patient, I used a regular ink pen to give a 2D look.

My entry portrays a microscope, but rather than observing a slide or specimen, it is looking at a full-bodied patient to express the potential numerous diagnoses in any part of the human body. To further link the piece to pathology, the background of the composition is of lung tissue.

Runner up: 'Coarse Focussing on Pathologists' by Mads Heritage (United Kingdom)



Blood sample in acrylic paint; pathogens in sand and acrylic paint; pathologist in coloured pencils; lab coat, microscope and pathology-associated words in graphite pencils.

Pathologist analysing a sample from their patient to understand and help to diagnose them with a particular disease/infection. Blood sample shows sepsis which has severely effected a close family member and millions worldwide.

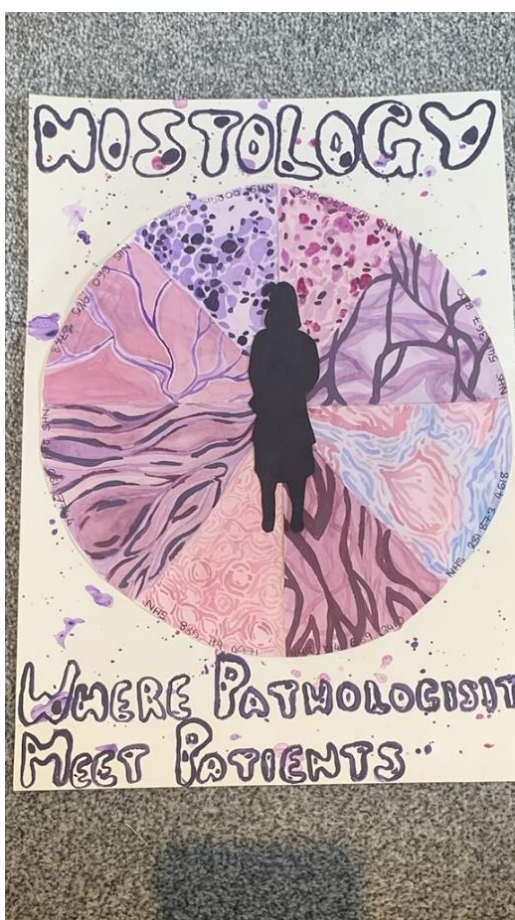
Commended entry: 'Beneath the surface' by Immy Clement (United Kingdom)



Firstly I used pencil to sketch my design, then I used a mix of watercolour and acrylic paint. To finish I added in some extra details with coloured pencils.

My artwork shows the different areas of pathology with patients, histology pathologists and more. I included some of the main aspects of pathology such as infections, immunity, toxins, genetics, etc. The NHS is very important and I wanted to show some of the amazing things they do caring for people.

Commended entry: 'Where Pathologists meet Patients' by Abigail Holly Ward (United Kingdom)



The background of the stains is watercolour with acrylic paint on top to enhance certain areas. The text and silhouette are acrylic paint. The background is watercolour as well.

The circle consists of H&E stains, each with a unique NHS number. The silhouette of a pathologist in the centre connects each scan, representing how many patients they meet, even if a few cells. The spots in the back is the stain and the text is supposed to mimic cells.

Commended entry: 'Looking through a different lens' by Krishna Bansal (United Kingdom)



Coloured pencil and a sketching pencil

My artwork aims to tackle the stereotypical view of pathologists in society. Each lens of the 3D glasses provides a different perspective on the role pathologists play for their patients. Through the red lens one can see the negative clichés associated with the field, such as antisocial behaviour, lack of hands on experience and preference to working with dead patients. On the contrary, the blue lens provides a fresh perspective, demonstrating the key role a pathologist plays in a patient's treatment pathway. Whilst direct interaction with patients is limited, a pathologist works with them on a '100x level' represented by the cells, DNA and microscope. I hope my artwork will help to spread awareness on just how important pathologists are to medicine.

Commended entry: 'Pathology that crosses boundaries' by Lily Scott (United Kingdom)

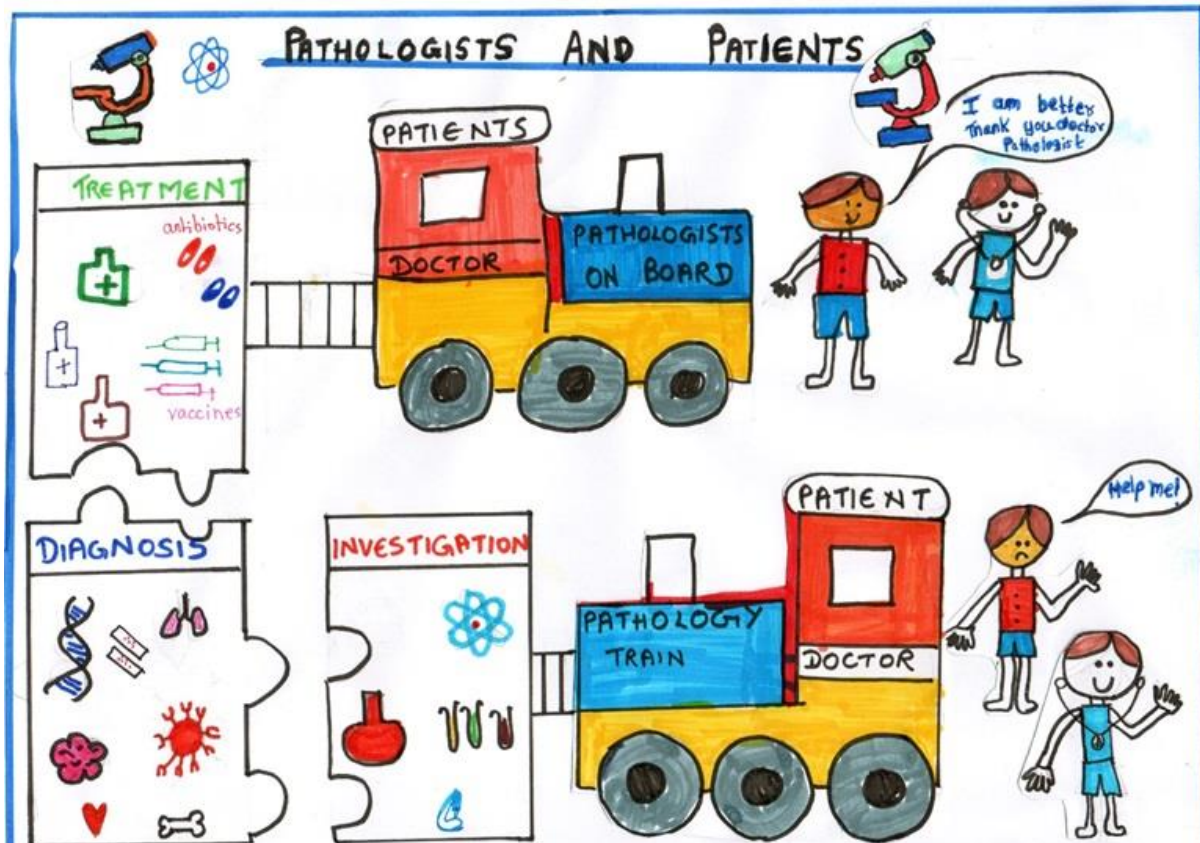


Drawing

My drawing demonstrates the interaction between animals, patients and the work of pathologists. The child has a brain tumour and the dog has cancer, both were diagnosed by the pathologist. The pathologist is meeting the dog and the child for the first time.

Under 11s Category

Winner: 'Pathologists and Patients' by Zaid Haris (United Kingdom)



I have used felt-tip pens for colouring and drawing.

I understood how a patient's journey takes place and how pathologists help solve the problem by identifying what is making the patient ill and what treatment can be given to help them. This gave me the inspiration for the train journey and how at different stations the patient gets the care.

Runner up: 'The Bridge of Pathology' by Anton Rogers (Ireland)



Coloured pencils

I used pencil and colouring pencils for my artwork. "Pathology is the bridge between science and medicine." My drawing shows the bridge from the science to the medicine and between the pathologist and the patient.

Runner up: 'The Invisible Heroes from the Laboratory' by Saskia Chalanyova (Slovakia)



I used children wax crayons for my artwork because they taught me to use it in art school and I like it.

My picture shows when my cat was sick and we took her to the vet clinic. She had to stay there over night and I was very sad. My aunt who is a biology teacher explained me that veterinary pathologists needs time to do all tests. Using their microscopes they help vets make accurate assesments of animal patients so they can give them the right medicines. Veterinary pathologists are very important and their lab life can be hard with long ours even night and weekend work. They are kind of invisible heroes who helps save our animal friends. I got my own microscope for my 6th birthday and I want to be a scientist when I grow up. And I also want to be an artist in my free time.

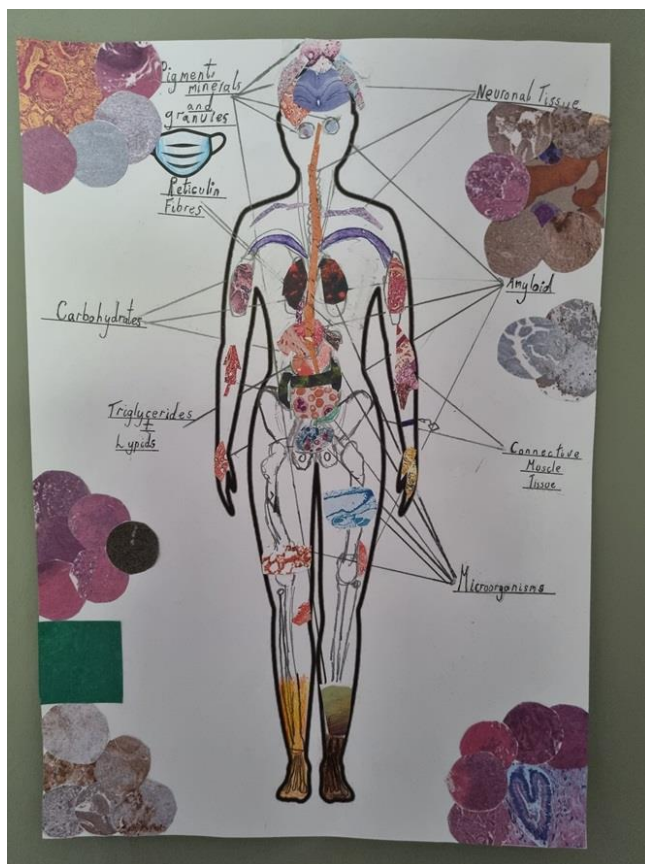
Commended entry: 'Path of Success' by Sofia Alam (United Kingdom)



I used blending techniques to create shadings and 3D effect, i also used colourful felt tips to illustrate and outline the products.

My artwork presents the shared connection between the pathologist and the solution for many diseases. It shows how a single life can change by the help of pathology and patients can overcome their fears by the help of modern medications, my drawing celebrates the importance of pathologists and NHS members who work tirelessly to find a cure for the hopeless patients..

Commended entry: 'Pathology through the Looking Glass' by Kitty Clement (United Kingdom)



My art is a sort of collage of many different tissue stains and I have stuck them to the body and labelled part where I have attached them. I have also sketched a brief structure of the skeleton and major organs in the middle.

I was inspired by tissue stains and the variety of patterns that can be found in them. Not only were they interesting to look at but they were also really beautiful. My patient is displaying some of the places that these mesmerising patterns can be located such as, Neuronal Tissue coating the spinal cord.

Researching and looking into Pathology has made me think about having pathology as a career later on in life...